

Industrial Premises

Daneside Business Park, Congleton

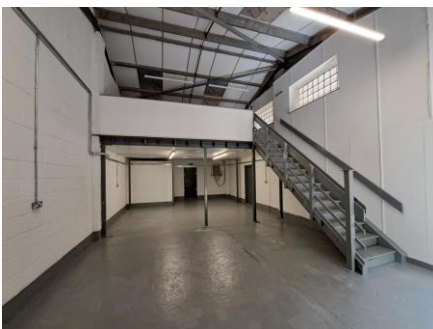
Unit 5 Daneside Business Park, Riverdane Road,
Congleton, Cheshire, CW12 1UN



UNIT TYPE: INDUSTRIAL

PROPERTY SIZE: 1,031 SQ. FT. (95.8 SQ. M)

Internal View



Unit Summary

- Under refurbishment
- Located on an established industrial estate
- Roller shutter
- Parking


Occupational Costs

Rent	£12,000 pa
Rateable Value	£6,500
Service Charge	TBC
Insurance	TBC

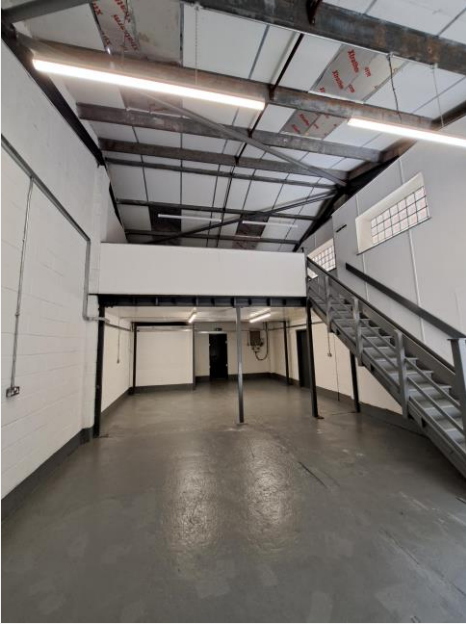
* Business rates not included in rent but 100% business rates relief available for eligible businesses subject to local authority confirmation

Industrial Premises

Daneside Business Park, Congleton

 Unit 5 Daneside Business Park, Riverdane Road,
Congleton, Cheshire, CW12 1UN

Internal View



Location

Road:

The premises is located on the established Daneside Business Park lying to the north on Congleton town centre.

The estate is accessed off the Macclesfield Road via Eaton Bank Road and benefits from good access to the Manchester Road (A34) and the new Congleton Bypass (A536). Access to the M6 Motorway is via Junction 17 which is approximately 8.5 miles.

Rail: The property is located 2.5 mile from Congleton Railway Station.

Brief Description

The property comprises a warehouse/industrial unit of steel portal frame construction with brick elevations.

The unit is under refurbishment including roof replacement or over cladding and LED lighting. Loading access is available via a roller shutter door, there is a W/C and office accommodation.

External the property has parking and yard area to the front.

Accommodation:

Warehouse	791 sq. ft.	(73.49 sq. m.)
First Floor	240 sq. ft.	(22.31 sq. m.)
Total Gross Internal Area	1,031 sq. ft.	(95.8 sq. m.)

Map



UNIT TYPE: INDUSTRIAL

LEASE TYPE: full repairing and insuring

Contact

Charlotte Worthington, MRICS | c.worthington@sandyfordproperties.co.uk | 07842 422903

Sandyford Properties, 507 Leek Road, Stoke-on-Trent, ST1 3ER

enquiries@sandyfordproperties.co.uk | 01782 281 202

